



## Known errors and solutions

If an error occurs when you try to send a file from one state to another, one of the following solutions may help.

If the error cannot be fixed by the following solutions, click on 'Contact' in the [user manual main menu](#).

- 
- [First, identify the error](#)
- 

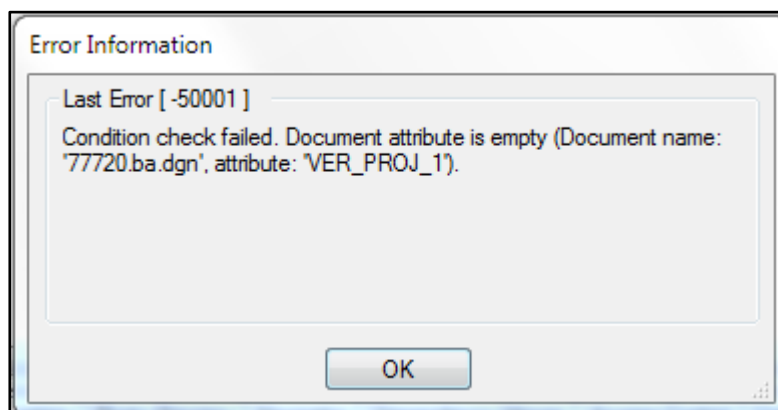
- [BOG1](#)
  - [DOKUMENTTYPE](#)
  - [GODKENDT](#)
  - [KOMMENTERING](#)
  - [KONTROL](#)
  - [PROJEKTERET](#)
  - [REV\\_GODK](#)
  - [REV\\_KONTR](#)
  - [REV\\_PROJ](#)
  - [TEGNET](#)
  - [TITEL](#)
  - [TRIG\\_FIRMA](#)
  - [VER\\_GODK\\_1](#)
  - [VER\\_KONTR\\_1](#)
  - [VER\\_PROJ\\_1](#)
  - [VER\\_TXT\\_1](#)
  - [VERSION1](#)
- 

### ***First, identify the error***

If you have to identify an error which occurs when you try to send a file from one state to another, you need to look at the last word in the error.

In the following case, the word is 'VER\_PROJ\_1'

When the word has been identified, you need to find it in the list below which also provides you with the solution to the error.



---

### ***BOG1***

The attribute 'Rev.' has not been filled in. Select a letter for the drawing revision.

#### **DISCLAIMER**

The translation into English of Quality Management Systems is to be regarded entirely as a service. In the event of any discrepancy or shortcomings in the translation, the Danish version will prevail. At any time the Danish versions of Quality Management Systems are those in force.



### **DOKUMENTTYPE**

The attribute *'Document type'* has not been filled. Write or select from the list the document type of the file

### **GODKENDT**

The attribute *'Approv.'* has not been filled in. Fill in who has approved the file.

### **KONTROL**

The attribute *'Review'* has not been filled in. Fill in who has performed quality control of the file.

### **PROJETERET**

The attribute *'Designed'* has not been filled in. Fill in who has designed the content of the file.

### **REV\_GODK**

The attribute *'Approved by:'* has not been filled in. Fill in who has approved the file.

### **REV\_KONTR**

The attribute *'Reviewed by:'* has not been filled in. Fill in who has performed quality control of the file.

### **REV\_PROJ**

The attribute *'Designed by:'* has not been filled in. Fill in who has designed the file.

### **TEGNET**

The attribute *'Draftsman'* has not been filled in. Fill in who has set up the drawing.

### **TITEL**

The attribute *'Title in document'* has not been filled. Fill in the title of the document you have created.

### **TRIG\_FIRMA**

The attribute *'Originator (Company)'* has not been filled in. Fill in the name of the company from which the file originates.

### **VER\_GODK\_1**

The attribute *'Approved'* has not been filled in. Fill in who has approved the file.

### **VER\_KONTR\_1**

The attribute *'Review'* has not been filled in. Fill in who has performed quality control of the file.

### **VER\_PROJ\_1**

The attribute *'Designed'* has not been filled in. Fill in who has designed the file.

### **VER\_TXT\_1**

The attribute *'Version note'* has not been filled in. Write a short text about why a new version of the file has been created.

### **VERSION1**

The user has no rights to perform the action.

---

#### **DISCLAIMER**

The translation into English of Quality Management Systems is to be regarded entirely as a service. In the event of any discrepancy or shortcomings in the translation, the Danish version will prevail. At any time the Danish versions of Quality Management Systems are those in force.